



Kariong Public School

NEWSLETTER

View to the future

Langford Drive Kariong NSW 2250

PH: 4340 1885

E: kariong-p.school@det.nsw.edu.au

W: www.kariong-p.schools.nsw.edu.au

TERM 1 WEEK 3

ISSUE 1

12 February 2021

UPCOMING EVENTS



SCHOOL

FEB 16: Year 6 Leader

Induction Ceremony

WK8: Harmony Week

TERM 1: Gymnastics for
Kindergarten and Year 1



SPORT

FEB 15: Swimming Carnival



P&C

FEB 15, 7pm: Meeting



ABOVE: Our students look thoroughly engaged in their learning.

Principal's Report

Our students have continued to remain settled and happy in their classes after a wonderful start to 2021. The students have embraced the new school year and are enjoying new classrooms, new teachers and meeting new friends.

Kindergarten are having lots of fun and enjoying their days learning and socialising with new friends. It is lovely to see them eager to start the day each morning as they enter the school with big smiles.

Our teachers will be in contact next week with an overview of the year and a run down on individual class routines.

Continued on Page 2

Our
OFFICE
HOURS
are
**8.30am –
3.15pm**

MAKE
A
PAYMENT
LINK

Uniform Shop
NEW HOURS
Tuesdays
8:30am-9:30am
Thursdays
8:30am – 9:30am

**SECURITY
HOTLINE**

**1300 880
021**

**CANTEEN
ONLINE
ORDER**

*[www.flexis-
schools.com.au](http://www.flexis-schools.com.au)*

Continued From Page 1

Unfortunately, with the current guidelines and restrictions in place by the Department of Education, we are constantly changing our forms of communication and we thank you for your understanding and patience.

If you have concerns please see the table below which may assist you as to how to address any issues here at school. Please do not hesitate to contact the front office any time if you need to speak to someone directly.

Please do not dwell on any concerns you have for your child and make an appointment as soon as issues arise so we can all work together to alleviate concerns.

2021 School Leader Induction Ceremony

Our Year 6 student leaders and sport house captains will be inducted into their official roles next Tuesday at our Induction Ceremony. I am already impressed with our leadership team for 2021 and I am looking forward to working with them throughout the year.

Congratulations once again to all of these wonderful students on their leadership roles for 2021.

High School Forms for 2022

Every Year 6 student would have received an expression of interest form for parents to add family details and check the local high school is correct. This is just an expression of interest required from the department of education and an opportunity to apply for any out of area requests. If you have any questions please ask your child’s teacher or phone the front office.

Swimming Carnival

I look forward to seeing all of our students 3-6 and our Year 2 students turning 8 this year on Monday at our annual swimming carnival. As you are aware there are also changes to this annual event but I am sure our competitors will enjoy their day competing against their peers. Students not competing at the carnival should attend school as normal.

P&C meeting

The first P&C meeting for 2021 will be on Monday February 15 at 7pm in our school staffroom. Every-

one is welcome and we would love to see as many new families join us as possible.

Before and After School Care

Our new Before and After School Care service under the management of Coast Community Connections is opening on Monday February 15. I have included some information in this newsletter for you to read.

Please remember that our Kariong Neighbourhood Centre service is still operating and working closely with the school. There is no obligation or expectation that children move from the already established care arrangements.

If you have any questions in regard to this onsite service there are contact details on the flyer and information sheet attached. Have a great weekend!

Toni Skinner
PRINCIPAL

Online Enrolment

We are excited to announce the roll out of the new Online Enrolment System. The Online Enrolment System is designed to provide flexibility for our parents to submit an enrolment application online and at the time that best suits you. The application can be accessed on all browsers and mobile devices including iOS and Android.

- The online application process is currently restricted to:
- Enrolments into local schools only
 - Children who are Australian citizens,
 - New Zealand citizens or permanent residents

- Children who live in NSW.

We offer our support and encourage you to complete your application to enrol online. If, however, you do not feel comfortable completing an application online, a paper copy will be available for collection from our front office or can be downloaded from the Department’s going to a public school site.

Further information about online enrolment can be found on our school website under the ‘Enrolment’ tab. If you require further information, please call Kariong Public School on 024340 1885.

Online Payments

It is very easy for parents to make online payments to the school via a secure payment page hosted by Westpac. Payments can be made using either a Visa, MasterCard credit or debit card, and can be made via computer, tablet or mobile phone. This is a secure payment system hosted by Westpac to ensure that your credit/debit card details are captured in a secure manner; these details are not passed back to the school. The DoE preferred method for all money coming into the school is the Payment On-Line facility (POP) through the school’s website: Kariong-p.school@det.nsw.edu.au.

Helpful Hints

- If a POP payment is made before 6pm, your payment will be processed on the next day’s school statement.
- If it is made after 6pm, the school will be notified two days later.
- Please ensure that on your child’s permission note, you fill in the section for POP which will require the receipt number.

CONCERNS	APPROPRIATE ACTION
The academic progress of own child	Contact the child’s teacher either by email / note or by phoning the school to arrange a suitable time to discuss any issues.
The welfare of own child	For minor issues contact your child’s teacher to clarify information. For more serious concerns, contact the School Office. State nature of concern and arrange a suitable time to talk with class teacher or appropriate staff member. To convey information about change of address, telephone number, emergency contact, custody details, health issues etc. please contact the School Office.
Actions of other students	Contact the class teacher for a classroom problem. Contact the Stage Supervisor or Deputy Principal for playground problems. At no time should a parent approach another child other than their own to address an issue at school. Please see a staff member to discuss the issue.
School policy or practice	Contact the School Office. State nature of concern and make an appointment with the principal.

REMINDER ABOUT MONEY COLLECTING PROCEDURES

It is very easy for parents to make online payments to the school via a secure payment page hosted by Westpac. Payments can be made using either a Visa, MasterCard credit or debit card, and can be made via computer, tablet or mobile phone. This is a secure payment system hosted by Westpac to ensure that

your credit/debit card details are captured in a secure manner; these details are not passed back to the school. The DoE preferred method for all money coming into the school is the Payment On-Line facility (POP) through the school’s website: Kariong-p.school@det.nsw.edu.au.



- At the bottom of every note that requires payment, there is a section for cash, cheque, and Payment On Line, for your convenience.
- Please do not make payments for uniforms on this site. The Uniform Shop is privately run and their website for ordering is: gtschool.com.au.**

Unlocking the Library With Mr. Brown

Book Club – This year, the school will be using ‘Loop’ and encouraging families to order their own books online through Book Club. The school will not be handling cash payments. As always, your child will bring home a Book Club Catalogue from school. Orders can then be made via the Scholastic Australia Loop website or app. Simply create an account or log in at scholastic.com.au/loop. Here are the steps to follow:

- If you are new to Book Club, follow the Wizard to set up your profile
- Click the ORDER tab, and select your school and child’s class
- Add your child’s first name and last initial (so

- the school knows who the book is for)
- Enter the product item number shown on the Book Club catalogue
- Make payment via credit card.

The books will still be delivered to school and then forwarded on to students in classrooms. If you experience any difficulties, please feel free to speak to me or Scholastic directly.

Premier’s Reading Challenge

It is an aim of mine this year to encourage more students to participate and complete the PRC. It is a terrific program designed to instil a love of reading in children. The books are specifically chosen as examples of quality literature and the texts are varied to ensure all interests and reading levels are catered for. This year the challenge begins on March 1 and ends on Friday August 20, 2021. For more information, please visit the website.

This Week’s Library Riddle

In the classic book ‘Alice’s Adventures in Wonderland’, what does the Mad Hatter compare a raven to?



Principal’s Gold Book Award					
Amber B 3/4H	Ashleigh B 3/4H				
Merit Awards					
Jett S 1G	Jacqueline C 1G	Gracie F 1G	Keegen R 1G	Zoe F 1J	Eli M 1J
Eljay B 1T	Andie Mc 1T	Ruby L-W 2D	Ashton C 2D	Zoe D 2D	Roy K 2D
Aston K 2K	Oscar R 2K	Zade G 2M	Lisbeth L 2M	Aston F 2M	Ryan M 2M
Joshua W 2/3F					

SOCIAL AND EMOTIONAL LEARNING (SEL)

Our values are statements about how we think we should behave and what we believe is important. Our school values are our moral map, which guide our behaviour and actions. Our PBL values of **Respect**, **Responsibility** and **Personal Best** are integral to Kariong Public School. This year we are excited to build upon these values with the introduction of the “Bounce Back” - Social and Emotional (SEL) journey at KPS. This program will encourage the connections your child makes with others, increase your child’s sense of belonging, wellbeing and also encourage resilience. Regular information will be shared with our parent community via our school newsletter regarding the “Bounce Back” program and we look forward to your support in our efforts to improve the lives of our KPS community.

Some key SEL messages to communicate to your child about the importance of values

Your values are easy to talk about but harder to act on. The real test is whether you still follow your personal values when it is inconvenient for you or when there could be possible unpleasant or uncomfortable outcomes for you. Nobody is perfect, but it’s important to try to live by your values even though you may not always succeed as well as you would like. Keep trying to improve.

Be honest

Being honest means telling the truth and not stealing; it means giving things back when they belong to someone else and ‘owning up’ when you have done the wrong thing.

Be fair

Being fair means following the rules and not cheating; it means returning favours and kindnesses, and helping others to get justice and a fair deal.

Be responsible

Being responsible means not letting people down. It means doing the things that you have to do without being reminded. It also means choosing sensible behaviour instead of foolish or unsafe behaviour.

Be kind and supportive

Being kind means caring about other people and their wellbeing by doing kind things for others and

being supportive and showing thoughtfulness to others.

Accept differences in other people

Everyone is different in some way and that’s okay. If you accept that other people are different (e.g. where they come from, what they look like, what they like to eat or do, and in their opinions), then you get to know more people (and not just those who are similar to you), you include people who are different from you in activities and conversation, and you don’t tease or exclude them.

Co-operate with others

Co-operating means working together with someone to achieve something that you both want. It requires sharing ideas and resources, listening, encouraging each other, making sure that both of you have a say, doing your share of the work, and making decisions together that are fair to both of you.

Be friendly and include others

Being friendly means being kind and welcoming to others and trying to include people (even if they are not your close friends or they are people who are sometimes hard to like). This means looking in their eyes and smiling, saying hello, being kind and inviting them to join in games and conversations. Being friendly towards strangers is not a good idea until you are very sure they are safe people.

Be respectful

Being respectful means treating others as you would like them to treat you. It means thinking about other people’s feelings and rights, being polite and using good manners, and not insulting or hurting others or their property. If you want people to respect your rights, then you have to respect their rights.

Show self-respect

Self-respect means looking after yourself and standing up for yourself because you think you matter and should be treated well by others.

SPORT REPORT

On Tuesday 9 February, the BWPSSA Combined Basketball Trials were held at Niagara Park Stadium.

Mr Brown was the convenor and in charge of the entire event. Congrats on a fine effort organising!

Two students from Year 6, Ozzie F. and Tyler B., went and represented our school with the hopes of making it through to the next level. Well done to both boys for giving it their best, and an extra congratulations to Ozzie for making it into the BWPSA Combined Boys team. Good luck in the Sydney North trial in March!

Mr Gilks
TEACHER

REMINDER ABOUT MONEY COLLECTING PROCEDURES:

All cash money sent to the school is to be brought to the Administration Office and placed into the letterbox slot that is on the front wall near the counter. This will allow payments to be placed securely, even when the office is not open. Please do

not leave money on the counter. We ask that the envelope be marked with your child's name, class and what the payment is for, to allow the payment to be processed.

The office staff will administer all money and a receipt will be issued to the family, which will go to the student's class teacher to send home. This procedure ensures better handling of all monies and reduces disruption to teachers and students.

We provide a variety of ways to make payments within the school, to make it easier for families and alleviate some students bringing large amounts of money to school. EFTPOS payments may be processed at the Administration Office between hours 8.30am – 3.00pm. We no longer are permitted to take EFTPOS over the phone.

For any enquiries regarding the online payment process, please contact Kariong School Administration Office.

Kariong School Administration Office

If you have **changed** your phone numbers, address or emergency contact numbers, please phone the school office (4340 1885) or send a note to the office with updates.

You can also email changes to:
kariong-p.school@det.nsw.edu.au.

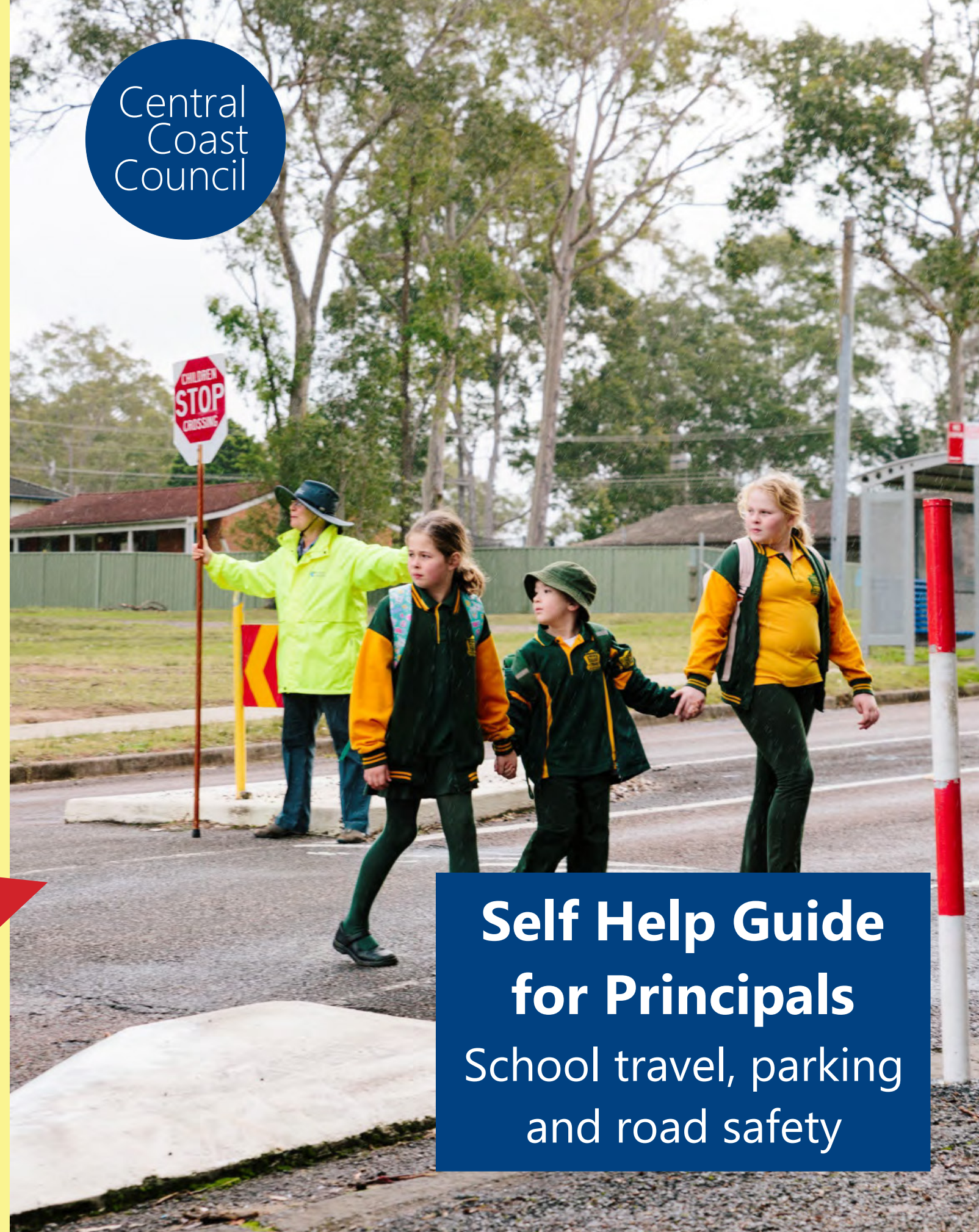
Are you receiving our newsletter by email?
If not, please contact the office.

PLEASE NOTE: **Payments** to the Uniform Shop need to be made to: gtschool.com.au as it is privately owned and NOT through school POP.

Thank you. If your child has a medical condition and you haven't completed forms with the office, please also contact the office.

IF YOUR CHILD HAS ASTHMA AND CARRIES THEIR OWN PUFFER, PLEASE ENSURE THE OFFICE HAS A SPARE PUFFER for YOUR CHILD.

Central
Coast
Council



**Self Help Guide
for Principals**
School travel, parking
and road safety

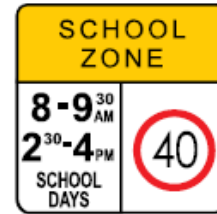
Alternative, sustainable and safer travel solutions for school communities



Traffic and Parking around your School

Parking rules are designed to stop vehicles from parking where it would be dangerous or inconvenient for others. Please consider the residents when parking in streets surrounding your school.

- ✓ A **School Zone** is the area around a school with a speed limit of 40 km/h. Between the School Zone and End School Zone signs you must obey the school zone speed limit. The school zone speed limit only applies on gazetted school days and during the times shown on the sign.



- ✓ **School Bus lights** – buses use signs and orange flashing ‘wigwag’ lights to warn motorists and pedestrians that they are picking up or setting down school children. The lights begin to flash when the bus stops and the doors are opened. They keep flashing for about 30 seconds after the doors close and continue even after the bus moves off. You must not drive past the bus in the same direction at more than 40 km/h while the ‘wigwag’ lights are flashing as there may be children crossing or about to cross the road.



- ✓ A **No Parking Zone** means that you must not stop for more than two minutes. You must remain in or within three metres of the vehicle. No Parking Zones are suitable for dropping off and picking up.

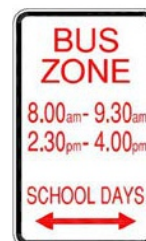


THESE SIGNS MEAN YOU MAY STOP HERE TO DROP OFF / PICK UP BUT YOU MUST

- stop for up to 2 minutes only
- stay within 3 metres of vehicle

**Kids look to you to keep them safe - please park legally in school zones
HEAVY FINES and DEMERIT POINTS APPLY**

- ✓ A **Bus Zone** means that the area is restricted for bus use only. If hours of operation are shown, the restriction only applies to this time. You may use this area outside of these times.



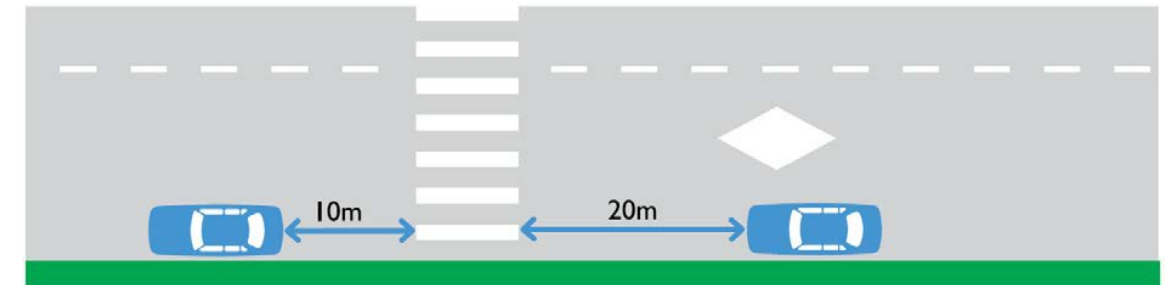
- ✓ A **No Stopping Zone** means no stopping at any time.



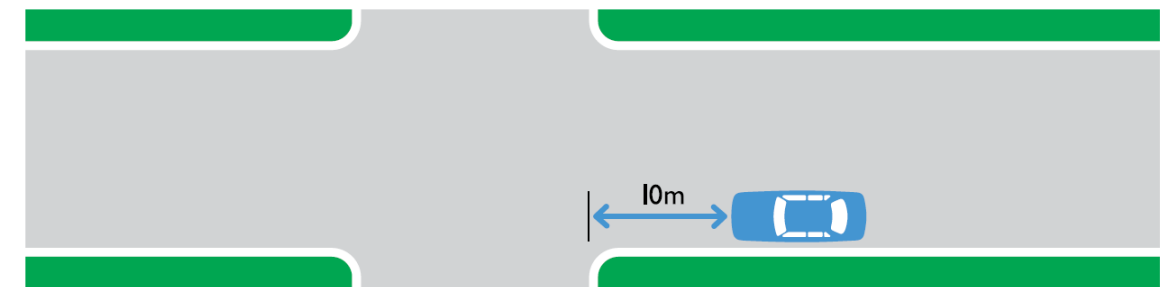
Other times when you must not stop

You must not stop your vehicle (that is, bring it to a stop and either stay with the vehicle or leave it parked) in the following circumstances:

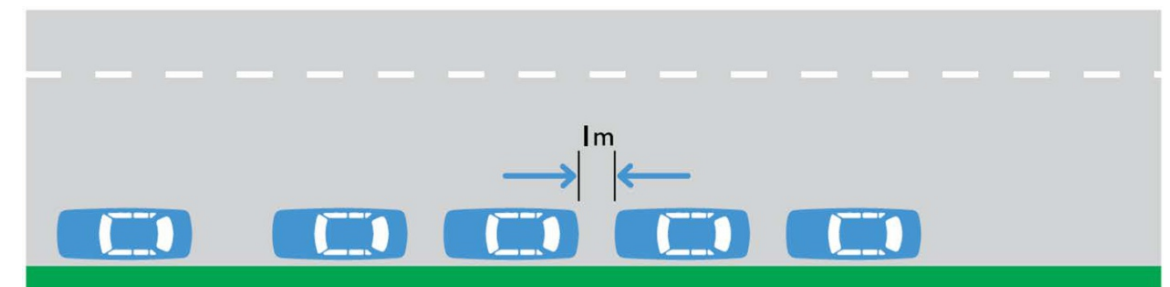
- ✗ Double parked (that is in the road alongside a car that is parked)
- ✗ Across a driveway or footpath
- ✗ On a median strip or traffic island
- ✗ On footpaths and nature strips
- ✗ On or within 20 metres before and 10 metres after a children’s crossing or pedestrian crossing



- ✗ Within an intersection
- ✗ Within 10 metres of an intersecting road at an intersection without traffic lights unless signposted otherwise



- ✗ In Bus Stop, Bus Zone, Taxi Stand or Taxi Zone signed areas
- ✗ At least one metre from any other parked vehicle, close as possible and parallel to the kerb, and facing the same direction as the traffic lane



- ✗ Within three metres of any double centre lines
- ✗ Within 20 metres before and 10 metres after a bus stop

Adherence to signposting, linemarking and road rules around your school will assist in providing a safe environment for the school community and residents.



NEW BEFORE AND AFTER SCHOOL CARE & VACATION CARE SERVICE AT KARIONG PUBLIC SCHOOL

Coast Community Connections in partnership with Kariong Primary School is opening a new Before and After School Care and Vacation Care service at Kariong Public School, commencing Monday 15th February 2021.

Located on the grounds of Kariong Public School, the new Before and After School Care service will be available every weekday from 6:30am to 9:00am and 3:00pm to 6:30pm. The Vacation Care Service will commence during the April 2021 school holidays and will be available from 7:00am to 6:30pm.

We are a local registered "Not For Profit" charity providing life changing community services caring for people from all walks of life across the Central Coast. We have been a leading provider of quality care to the Central Coast Community for 45 years with deep roots into local schools and the community. We are a large local employer; we provide over 80 plus jobs and all staff live and reside on the Central Coast. We additionally utilise over 300 local businesses ensuring that we support local jobs and the local Central Coast economy.

We currently manage and operate, 1 long day early learning centre, 4 OSHC Services and 2 Vacation Care programs across the Central Coast, with Kariong PS our newest addition.

We provide before and after school care, vacation care and long day care as well as a range of services to support the community including Youth and Counselling Services, Aged and Disability

services including Home Maintenance and Modifications.

Bruce Davis, Coast Community Connections' CEO, said with children's care services already operating in three other Central Coast locations, the organisation is pleased to be able to extend their offering to the Kariong school community to continue to strengthen the support provided to families on the Central Coast.

"With over 30 years of experience in children's services programs, Coast Community Connections takes a holistic approach to its childcare services and is guided by the input, ideas and belief systems of the child, the family and the educator," he said.

"Our philosophy and programs are focused on fostering children's wellbeing and development through recreational experiences and learning," he concluded.

"With childcare services being limited on the Central Coast, Coast Community Connections is pleased to be able to add a fourth service location, to provide even more options to support busy parents within our local community," said Mr Davis.

Please come and meet our team, view the brand-new facilities and enjoy a free BBQ sausage sandwich this Monday 15th February between 4:30-6pm.

For bookings and enquiries please contact Teresa Read on 0413 849 927.

GOSFORD TAILORING UNIFORM SHOP **** OPENING TIMES****

Tuesdays and Thursdays,
8:30am to 9:30am

Take a look at our FaceBook Page: kps uniformshop.
Note the Uniform Shop is owned by Gosford Tailoring.

The ONLINE shop to order uniforms is: gtschool.com.au. Payment through this site is via Paypal or credit card. Please do not make payments to the school website for uniforms.

Orders will be available the next day that the Uniform Shop is open. If you are unable to pick up at that time, items will be available for collection from the school office.

Payments can be made with cash or Eftpos at the Uniform Shop or Paypal/Credit Card if ordering online.



NEW Childcare Services at Kariong Public School

Outside of School Hours Care & Vacation Care

Coast Community Connections is pleased to announce in partnership with the Kariong Primary School community a brand-new childcare service for students, conveniently located on the grounds of Kariong Public School.

Commencing **Monday 15 February 2021**, children will be supervised by qualified educators who organise a variety of activities to ensure children get the most out of their time.

Before & After School Care Weekdays
between 6:30am - 9:00am, 3:00pm - 6:30pm

Vacation Care
7:00am - 6:30pm during school holidays

For Bookings
Please contact Teresa Read on **0413 849 927**

Please come and meet our team, check out the facilities and enjoy a free sausage sandwich this Monday between 4:30-6pm.



